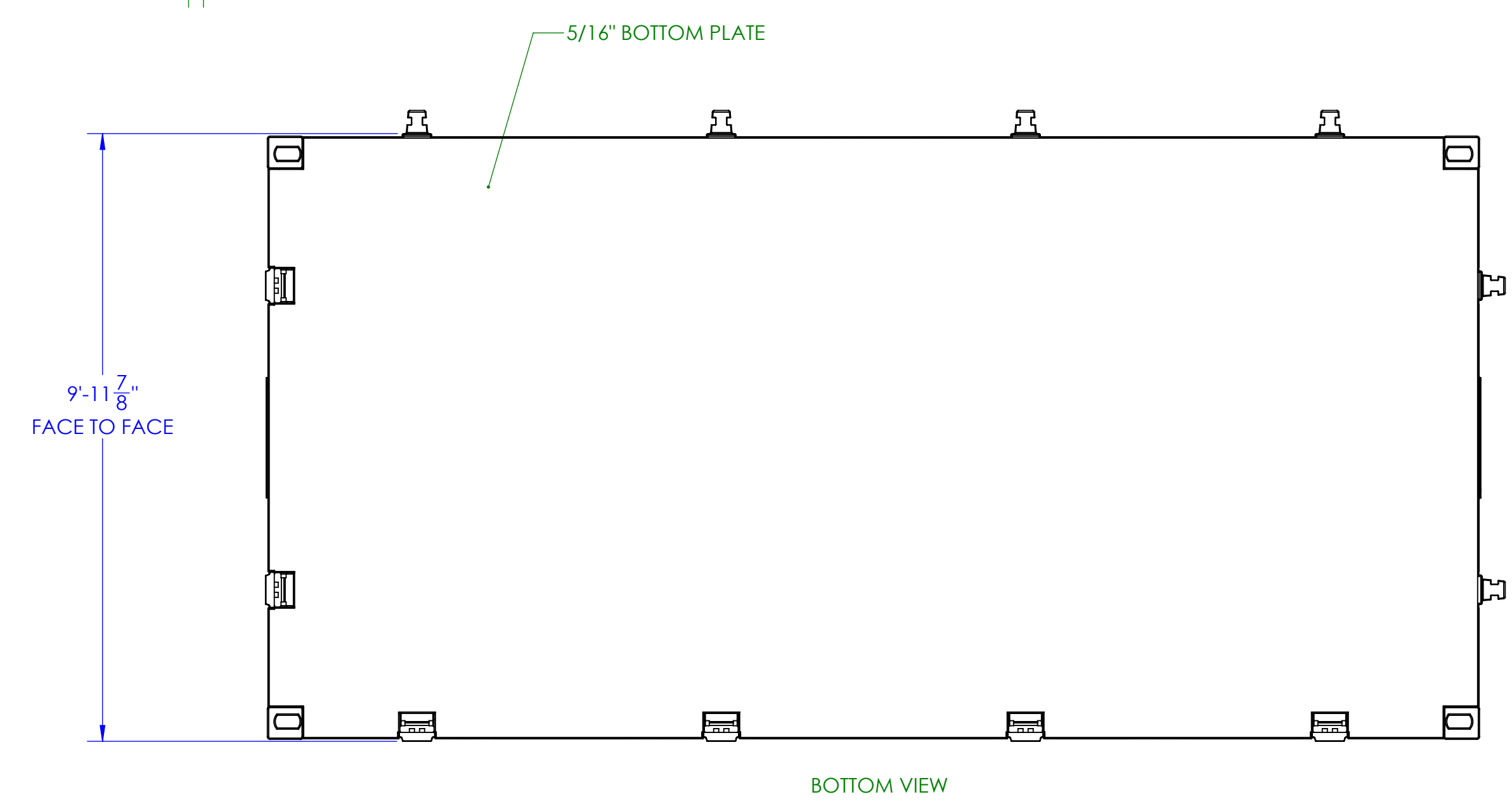
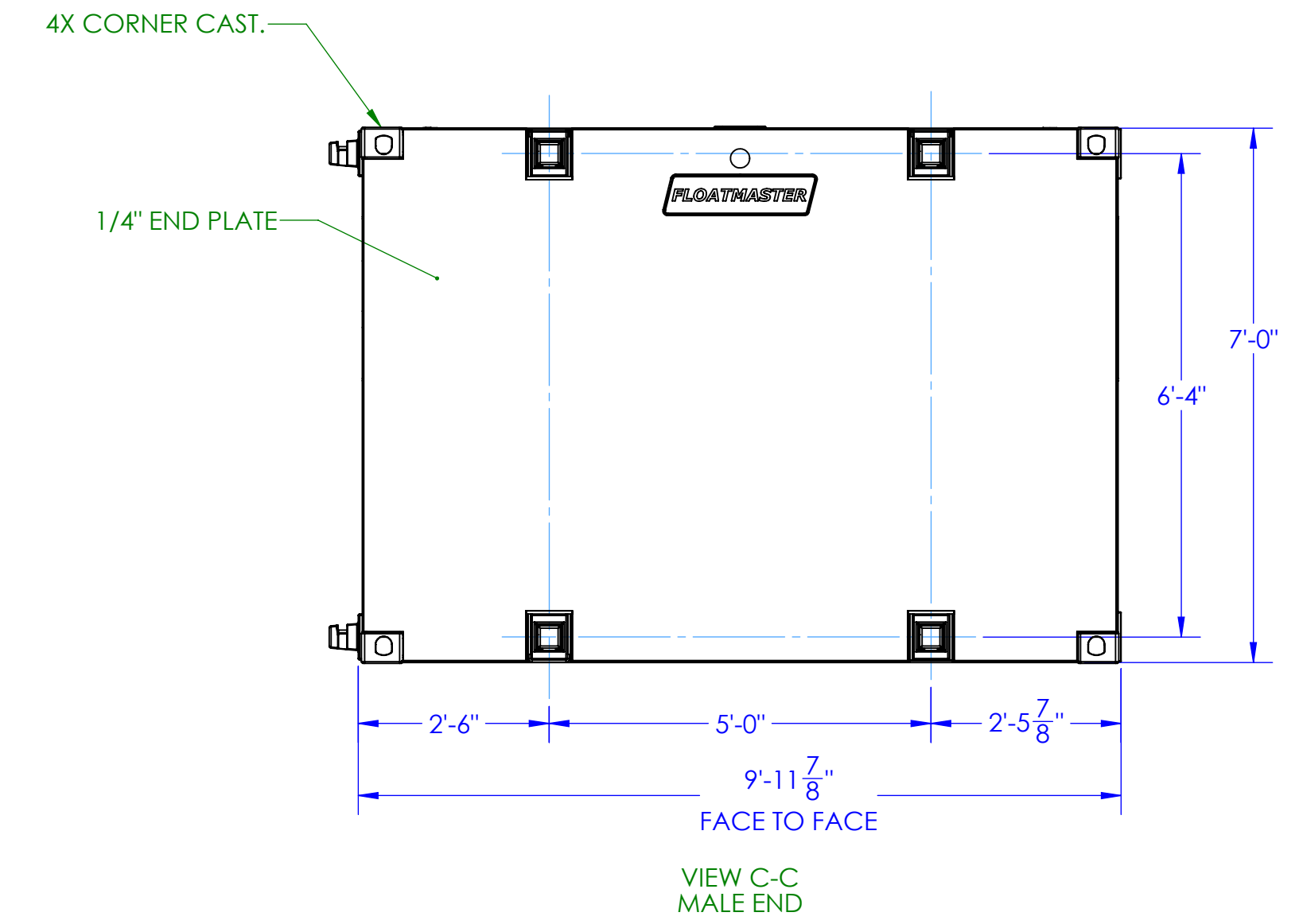
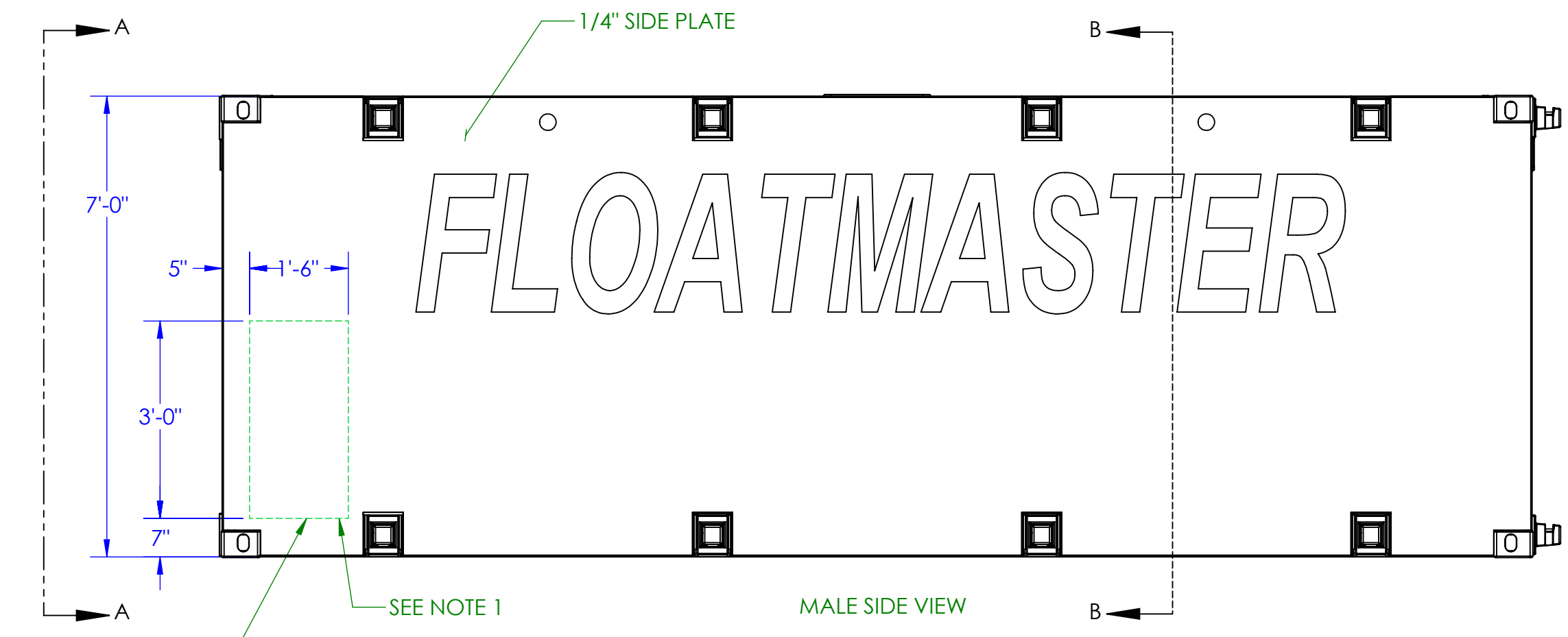
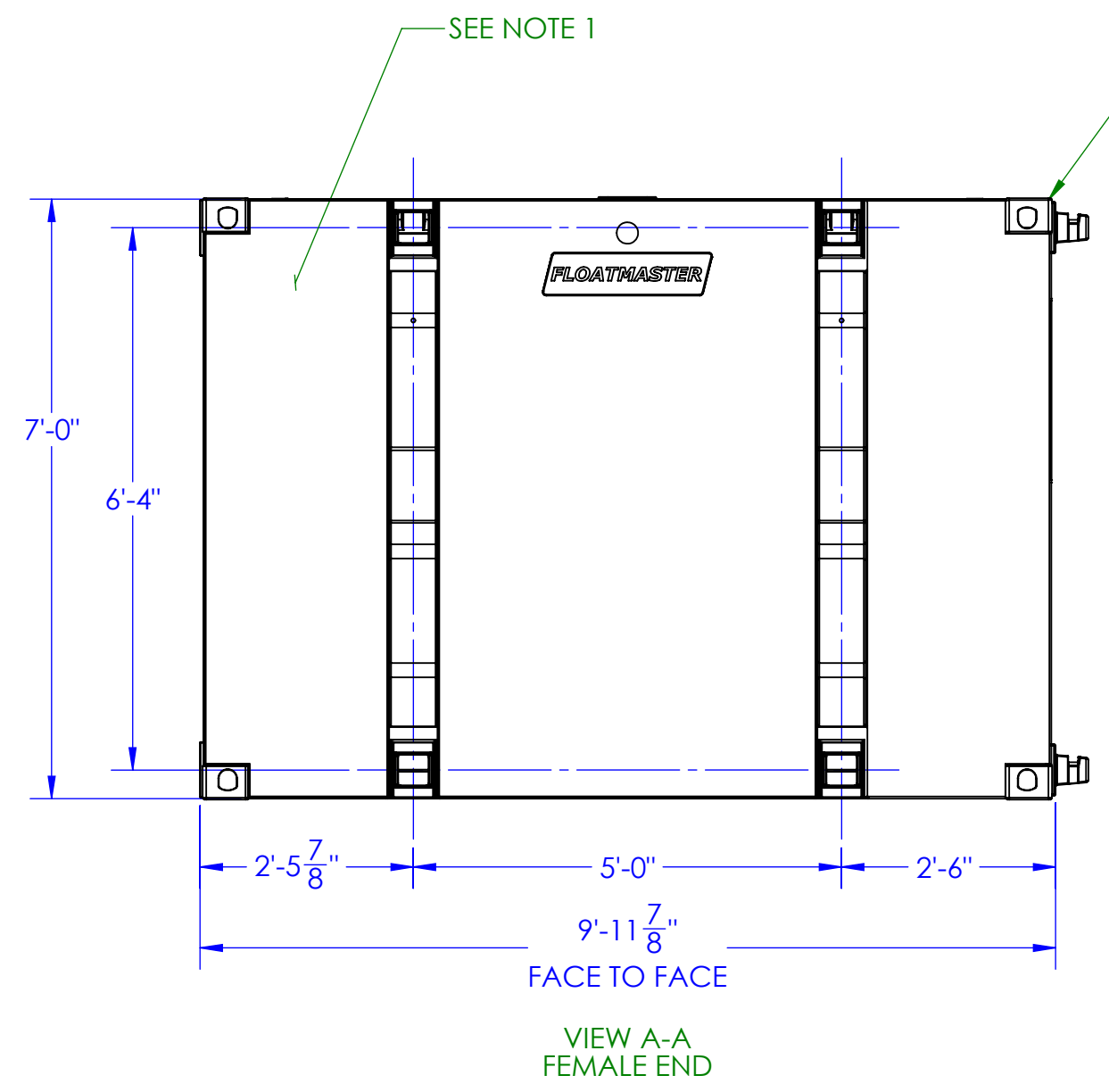
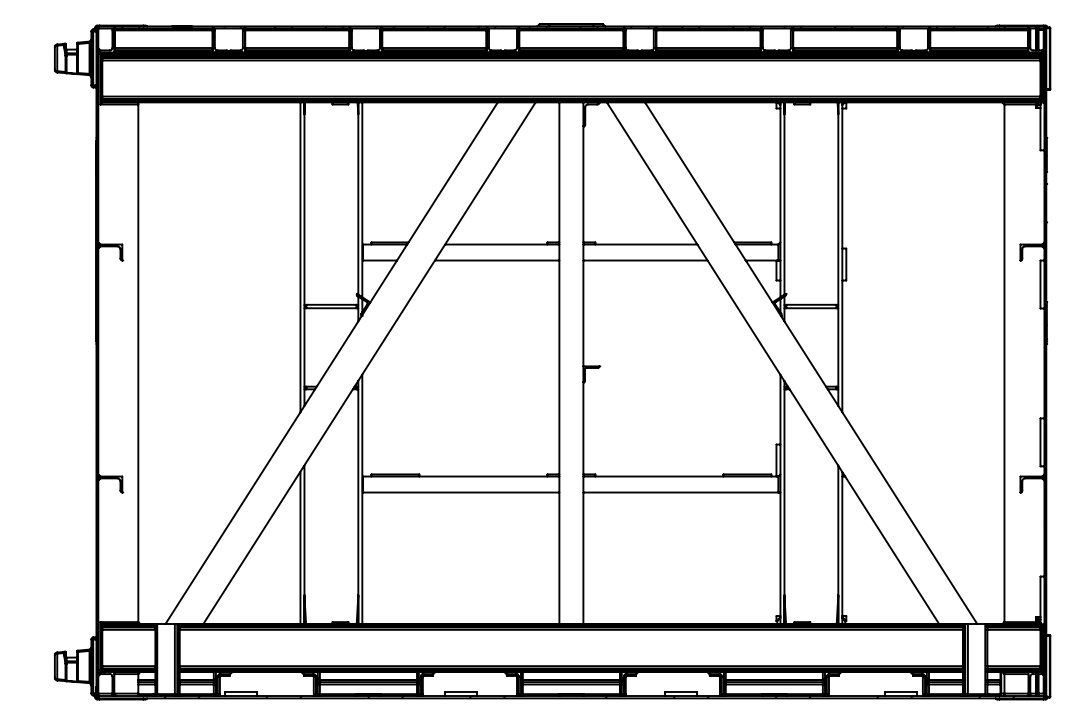
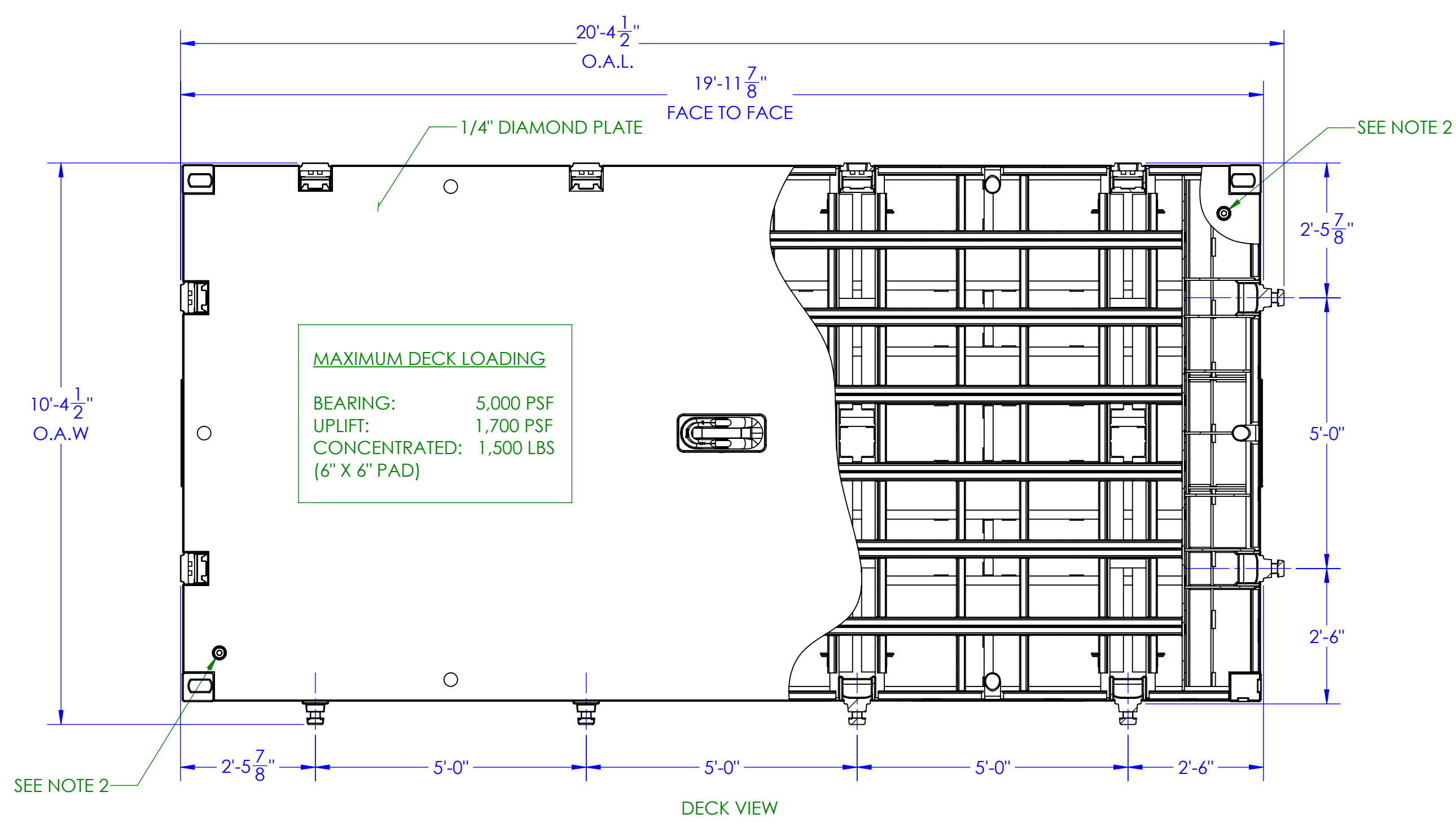


REVISION				
DRN	ECR	CHK	SD	REV
DATE	DATE	DATE	DATE	NO.
10/11/2021	10/11/2021	10/11/2021	10/11/2021	00



SPECIFICATIONS

UNIT WEIGHT: 17,586 LBS
 RATED LOAD CAPACITY @ 4.55 FT DRAFT : 19 TONS
 HORIZONTAL LOCK SPACING: 5.0 FT
 VERTICAL LOCK SPACING : 6.3 FT
 LOCK STRENGTH @ 65% YIELD: 70 TONS TENSION / SHEAR
 DECK BEARING CAPACITY 5,000 LBS./FT²
 SECTION MODULUS: TRANSVERSE SECTION BETWEEN TRUSSES:
 DECK / BOTTOM IN COMPRESSION: 6,701 IN⁴

NOTES:

1. TO ENTER FLOAT FOR INSPECTION OR REPAIR REMOVE FEMALE SIDE CORNER PLATES OR CUT OUT END/SIDE PANELS AS SHOWN. AFTER COMPLETION OF INSPECTION/REPAIR REPLACE PANEL, SEAL WELD, AND TEST FOR LEAKS AS DESCRIBED IN NOTE 2.
2. TEST FOR LEAKS BY APPLYING INTERNAL AIR PRESSURE OF 3 PSI MAXIMUM. BRUSH ALL EXTERNAL WELD SEAMS WITH WATER AND SOAP SOLUTION. LEAKS WILL BE DETECTED BY FORMATION OF SOAP BUBBLES.

THRUSTMASTER OF TEXAS, INC. GA, FM7200 20' X 10' X 7'

SCALE: 1:24 D
 DIMENSIONING CONVENTION: INCHES (mm)
 THIRD ANGLE PROJECTION
 DO NOT SCALE

MATERIAL: SEE B.O.M.
 FINISH: SEE B.O.M.
 EST. WT: 17790 LBS
 PROJECT REF NO: Y200495

DWG PART NO: D130240
 SHEET 1 of 1

C:\TMOT\Library\Paras\TMOT_SVM_Manufactures\BUBSIC130240