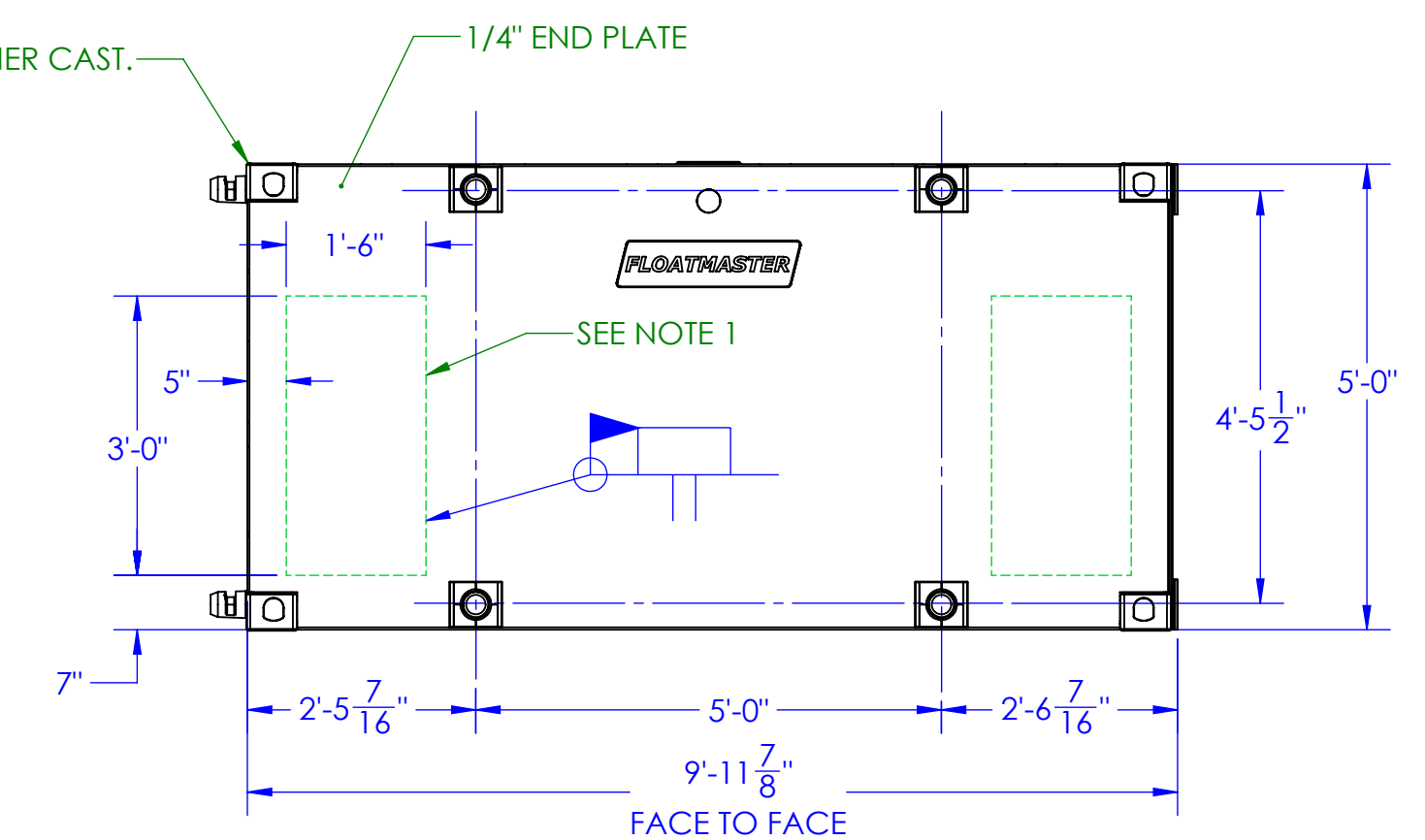
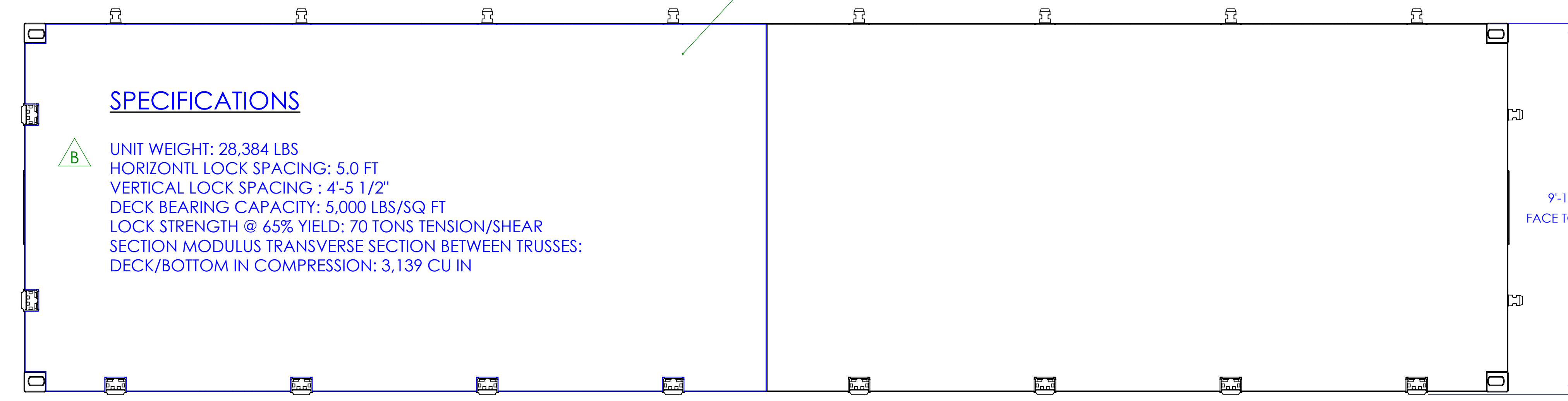
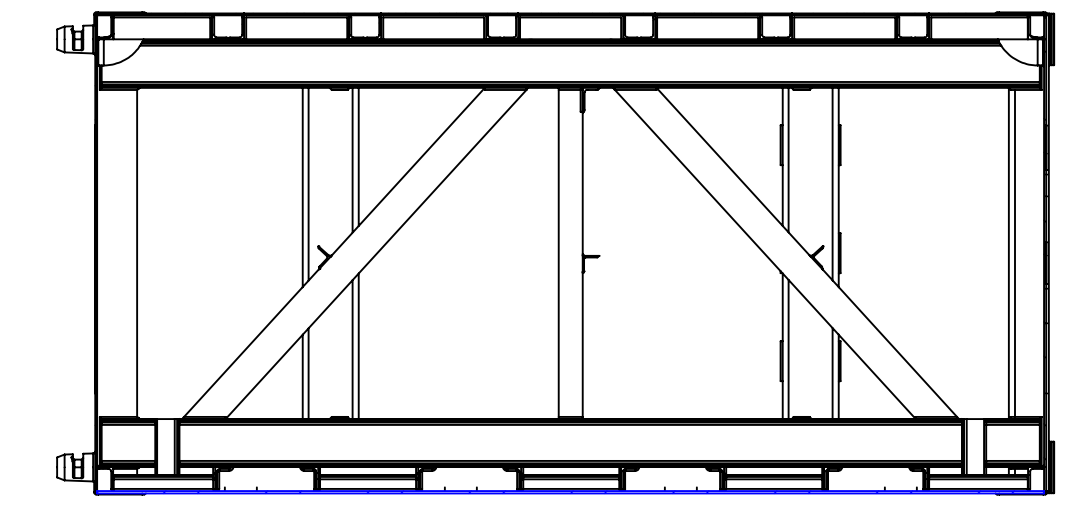
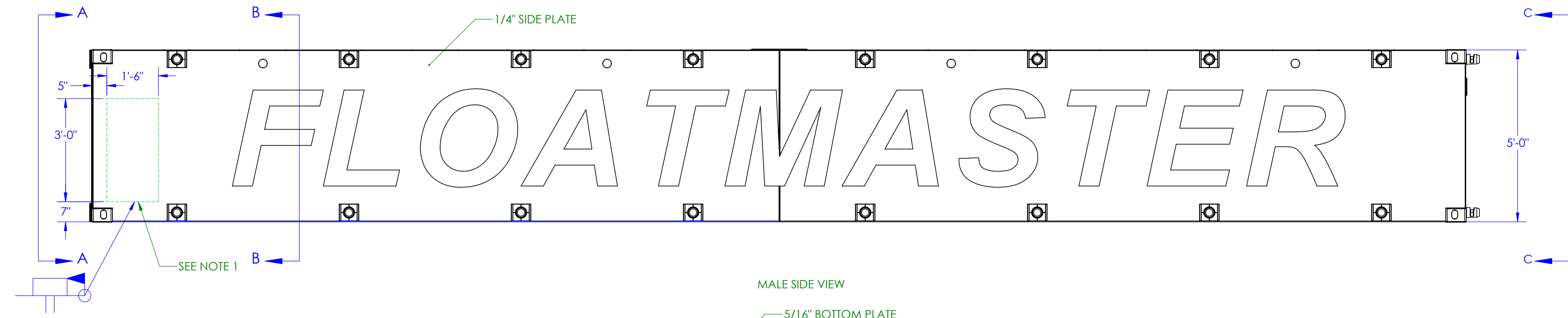
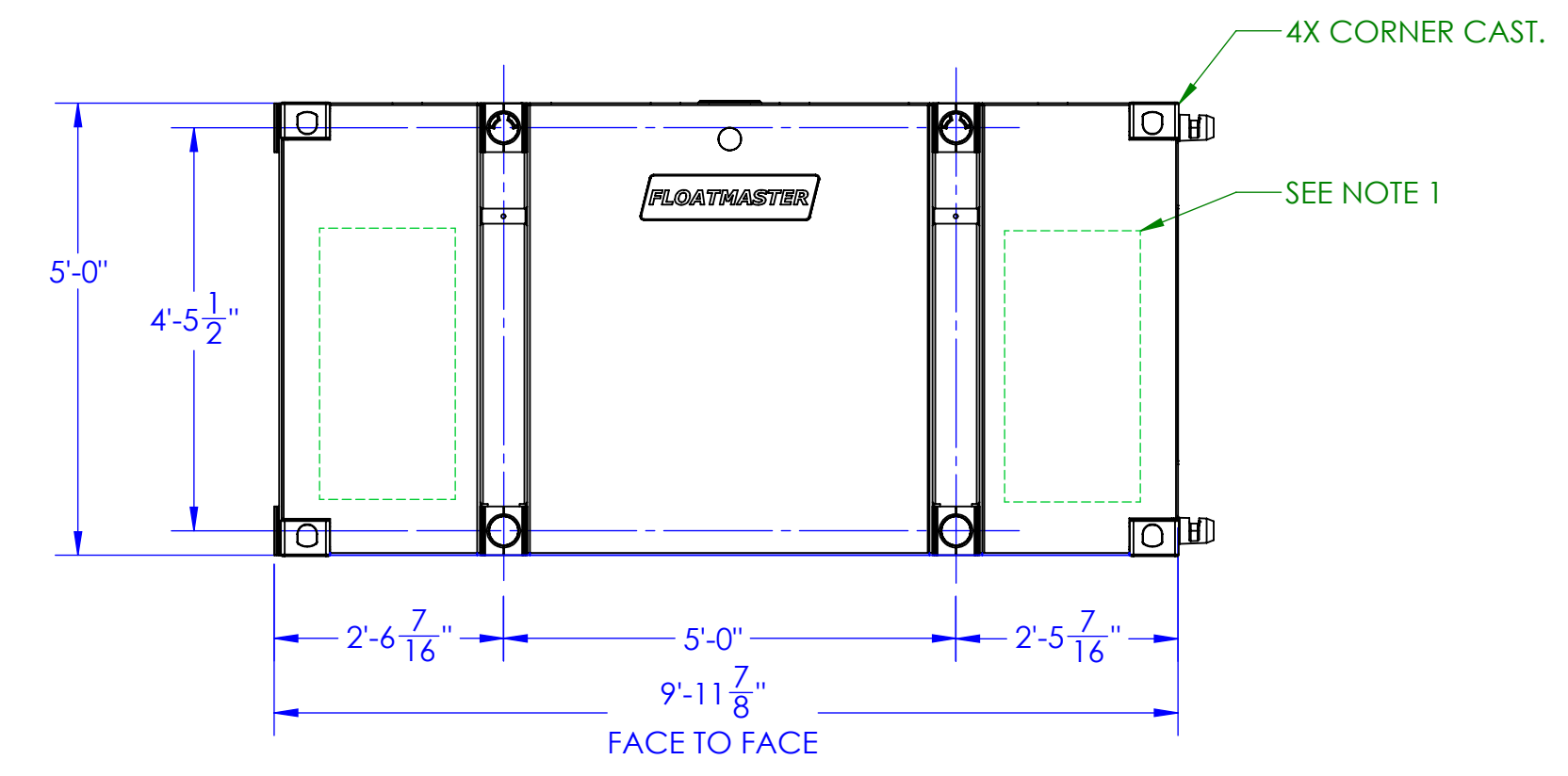
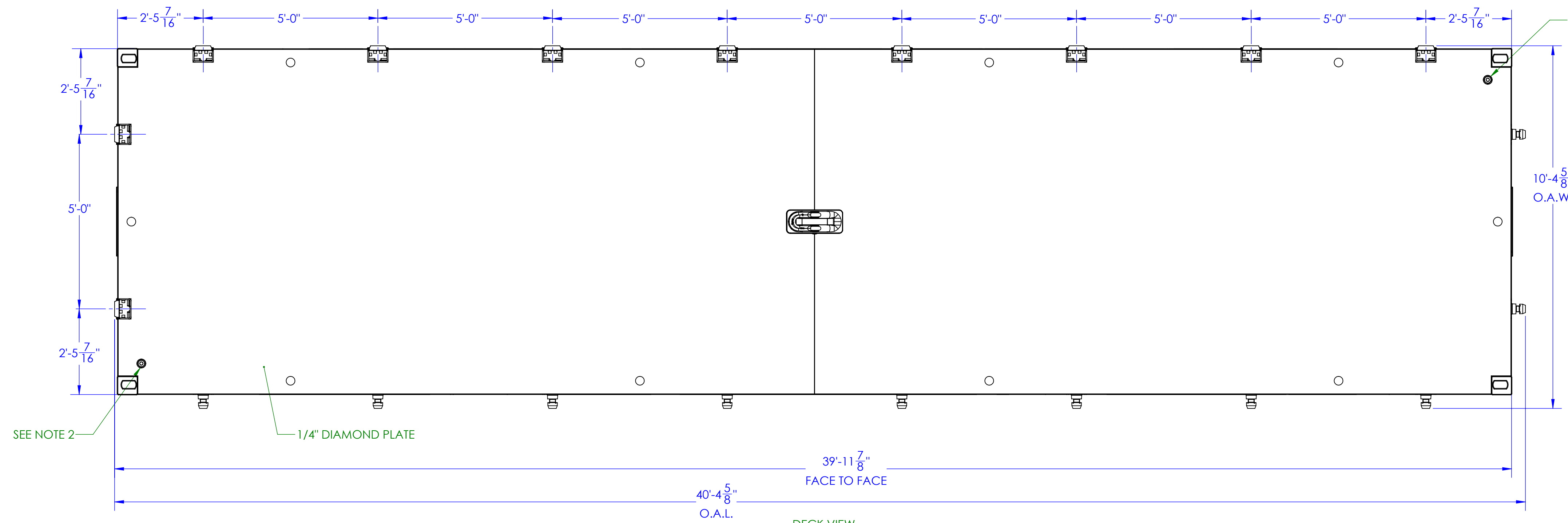


| REVISION | | | | | |
|------------|------|------|------|------|--------|
| DRN | MH | CHK | SD | APP | REV |
| DATE | DATE | DATE | DATE | DATE | BY |
| 05/05/2022 | | | | | B |
| 05/05/2022 | | | | | |
| 05/05/2022 | | | | | 220044 |



SPECIFICATIONS

UNIT WEIGHT: 28,384 LBS
 HORIZONTL LOCK SPACING: 5.0 FT
 VERTICAL LOCK SPACING : 4'-5 1/2"
 DECK BEARING CAPACITY: 5,000 LBS/SQ FT
 LOCK STRENGTH @ 65% YIELD: 70 TONS TENSION/SHEAR
 SECTION MODULUS TRANSVERSE SECTION BETWEEN TRUSSES:
 DECK/BOTTOM IN COMPRESSION: 3,139 CU IN

- NOTES:
1. TO ENTER FLOAT FOR INSPECTION OR REPAIR REMOVE FEMALE SIDE CORNER PLATES OR CUT OUT END/SIDE PANELS AS SHOWN. AFTER COMPLETION OF INSPECTION/REPAIR REPLACE PANEL, SEAL WELD, AND TEST FOR LEAKS AS DESCRIBED IN NOTE 2.
 2. TEST FOR LEAKS BY APPLYING INTERNAL AIR PRESSURE OF 3 PSI MAXIMUM. BRUSH ALL EXTERNAL WELD SEAMS WITH WATER AND SOAP SOLUTION. LEAKS WILL BE DETECTED BY FORMATION OF SOAP BUBBLES.

| | | | | |
|--|--|---|---|--------------------------------|
| THRUSTMASTER OF TEXAS, INC. <small>ALL DATA ON THIS DOCUMENT ARE PROPRIETARY AND MAY NOT BE USED, REPRODUCED, OR DISCLOSED WITHOUT THE EXPRESS WRITTEN CONSENT OF THRUSTMASTER OF TEXAS, INC. EXCEPT WHERE PROVIDED FOR IN THE LIMITED RIGHTS RELEASE TO THE UNITED STATES GOVERNMENT IF ANY. © 1987 THRUSTMASTER OF TEXAS, INC.</small> | | GA, FM5400 40' X 10' X 5' SCALE: 1:48 DIMENSIONING CONVENTION: INCHES (mm) THIRD ANGLE PROJECTION DO NOT SCALE | MATERIAL: D FINISH: D129934 CODE: 65848 EST. WT: 28384 LBS PROJECT REF NO: FM210367 SHEET 1 OF 1 | DWG/PART NO: D130325 |
|--|--|---|---|--------------------------------|

C:\TMOT\Library\Parts\TMOT SW Manufactures\Reqs\SD 130325